

SiteManager Materials



Capabilities

Dave Ahlvers

Construction and Materials Engineer
Missouri Department of Transportation

For

2009 ASSHTO Subcommittee on Construction



Materials Capabilities

- How much can SiteManager do with Materials data?
- More than you can imagine!
- I don't know about that...
I can *IMAGINE* a lot!

A paraphrased discussion between the characters Luke Skywalker and Hans Solo of "Star Wars"



Robust Reference Tables

- Universally, materials data involves repetition
- Reference tables allow us to access data that is used repeatedly
- Reference tables take advantage of the capabilities of modern relational database systems – such as the one you have at your agency

Materials

- The basic list of all materials



Producer/Suppliers

- Pits, Manufacturers, Warehouses, etc.





Producer/Supplier Plants

- For producers with multiple locations



Producer/Supplier - Materials

- Association between P/S and the materials they handle





Branded Products

- Producer/Supplier-Material-Brand
-

GRACE
Construction Products

A WORLDWIDE LEADER IN THE CONSTRUCTION PRODUCTS INDUSTRY



W. R. MEADOWS,
SEALTIGHT



Laboratories

- Each of the Labs used
 - Generic ("field lab") *OR*
 - Specific ("Harcourt Fenton Mudd Labs, Inc.")



Samplers/Testers/Inspectors

- Credentials and other useful information



Test Equipment

- Track verification and calibration



Contract to Material Association

- Finally, a connection between Construction and Materials



Mix Design Data

- Information – not design process





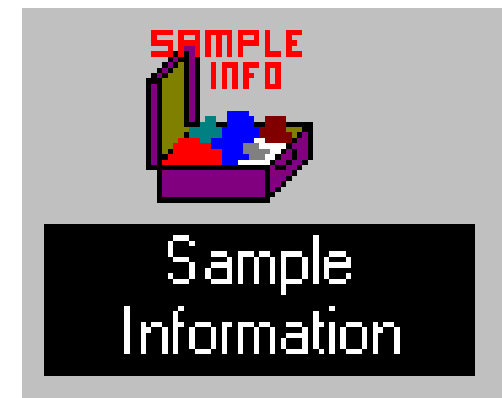
Reference Table Value

- Hundreds of specific details
- Effective and expiration dates
- Relationship to other values in the system
- Basis for creating Material/Sample Records



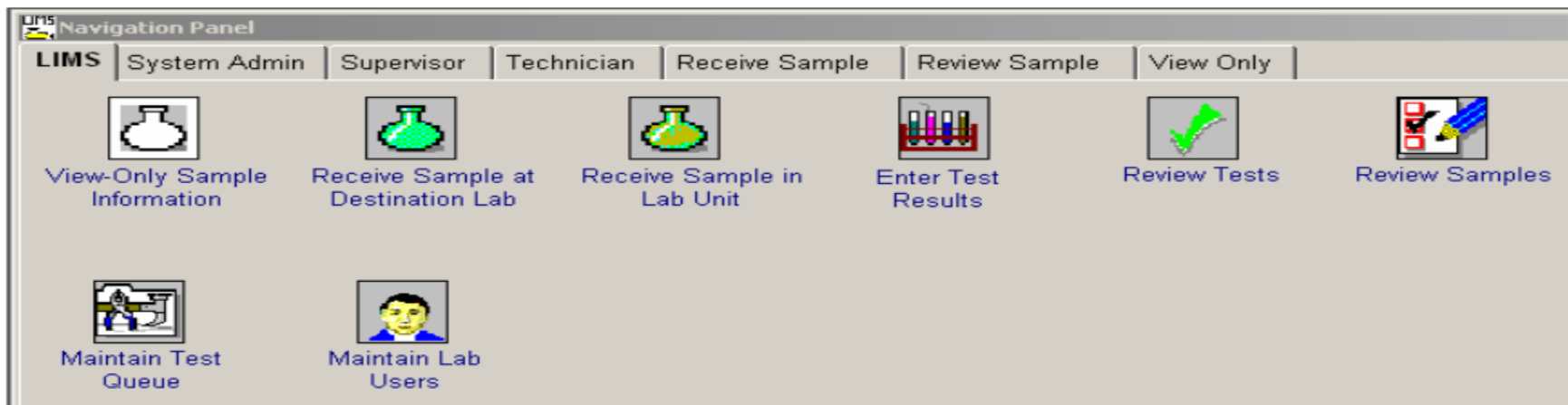
Material (Sample) Records

- Reference Data
- Current Job/Sample/Event Specific Data
- Combined to make Material Record
 - Sample Taken?
 - Material Quantity Report?
 - Certification Review?
 - New Product Submission?
 - Whatever you can IMAGINE



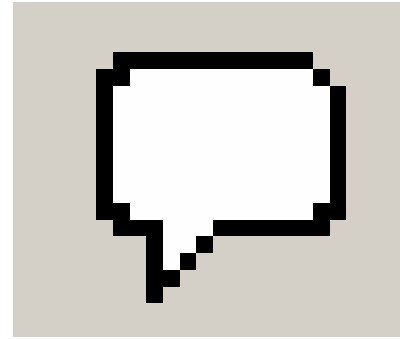
Laboratory Information Management System (LIMS)

- Testing Samples via SiteManager LIMS
 - Track sample into and through labs
 - Assign Tests and Testers
 - Allow Supervisor Review and Approve
 - Compare results from various samples






Remarks



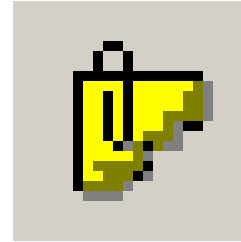
- Remarks are allowed in many places in the system
- Add additional information that does not fit in one of the designated fields.

Remarks (General Remarks) :

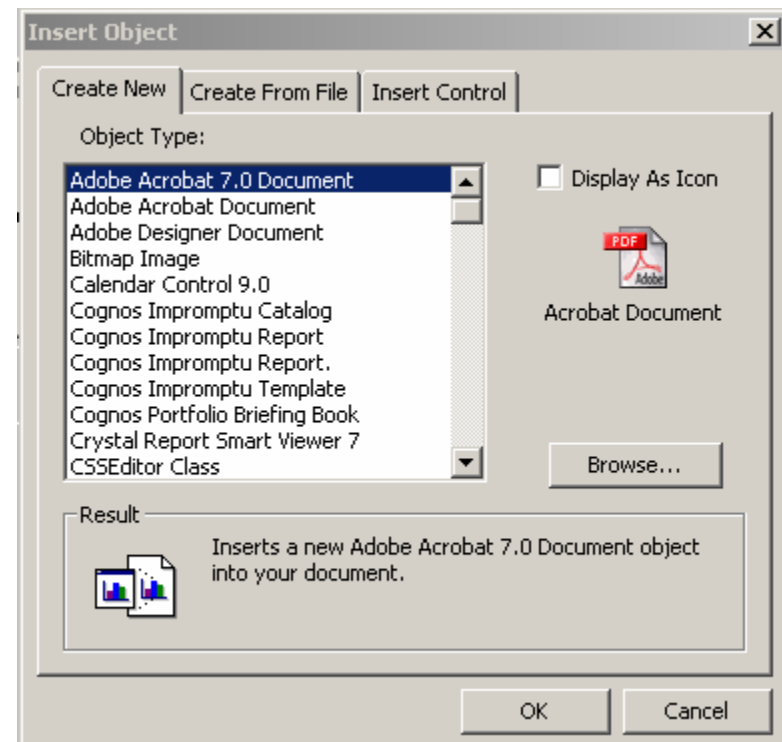
I can add any remark necessary, and in some places, more than one remark type is allowed.



Attachments



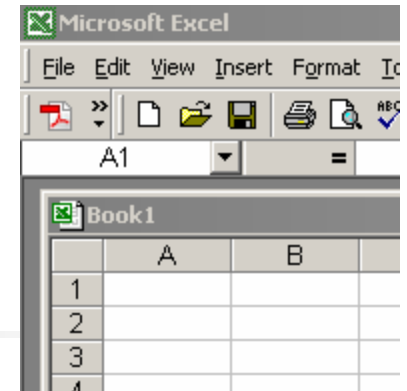
- Allows the attachment of an external file or document related to the data in the active window
- Secure
- Only designated users can see this.





Welcome to the Contractor Performance Rating System.

User ID:
Password:



Externals

- Agencies currently using SiteManager Materials import and export data using a variety of systems/processes.
- Third Party Queries/Listings
- Spreadsheets/Agency built applications
- Whatever you can IMAGINE
 - Discuss with your information tech people
 - For example: incorporate your mix design process



SiteManager Materials Capabilities

- Significant functionality is built in
- Most routine agency material related activities are covered at some level
- Customization is accommodated
- The only limits are those you impose
- SiteManager is a great place to start and take advantage of those who have gone before...



SiteManager
3.9a



LIMS 1.0

Thanks for your attention.



Missouri Department of Transportation

Our mission is to provide a world-class transportation experience that delights our customers and promotes a prosperous Missouri.