

Arkansas State Highway and Transportation Department



AASHTO – Subcommittee on Construction
Tuesday, August 11, 2015



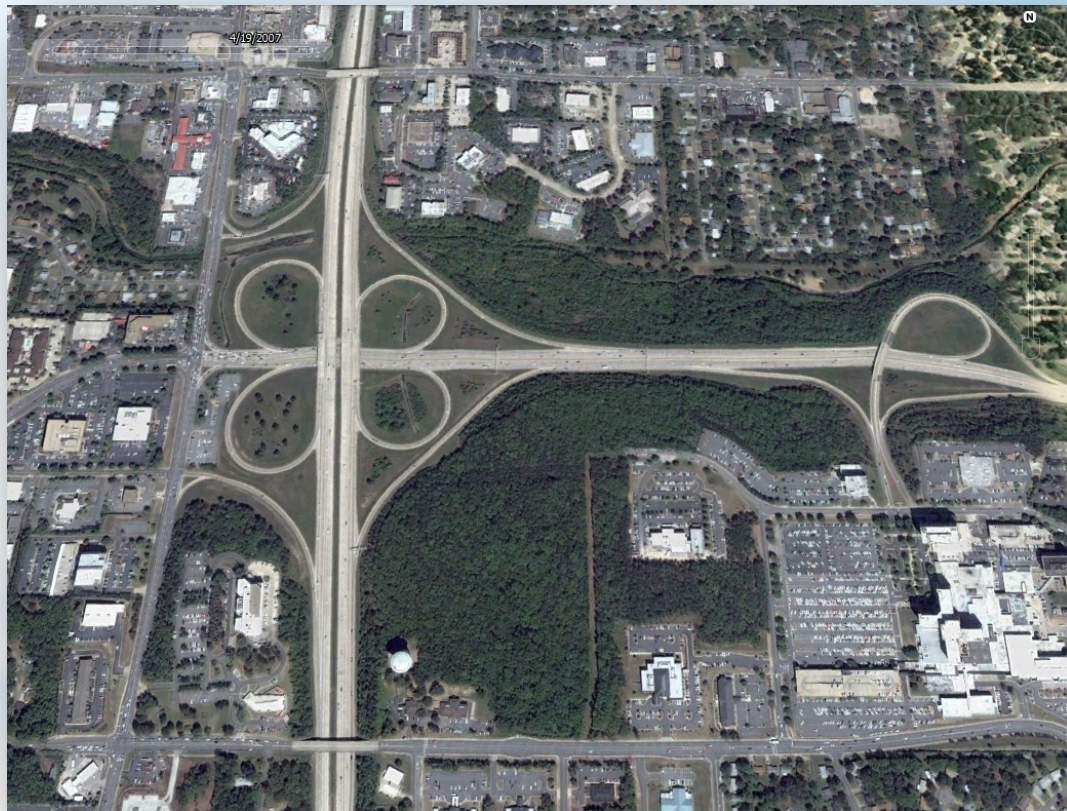
*Big Rock
Interchange*

1st



Big Rock Interchange

Pre-2009





Big Rock Interchange





*Big Rock
Interchange*

1st

Construction Phasing



Big Rock Interchange

PHASE 1

PCPM

Earmark	\$11,910,220
Interstate Maintenance	\$2,203,970
State	\$322,440
Earmark	\$5,885,485
Total	\$17,336,630

SARS

Let Amount	\$17,336,629.78
Change Orders	\$767,102.98
Current Contract Amt.	\$18,103,732.76
Total Amount Paid	\$17,364,494.98
Begin Work	1/7/2009
Subst. Completion	10/15/2010



Big Rock Interchange

PHASE 2

PCPM

ARRA	\$15,991,380
NHS	\$2,257,606
STATE	\$564,402
TOTAL	\$18,813,388

SARS

Let Amount	\$18,813,387.95
Change Orders	\$421,909.63
Current Contract Amt.	\$19,235,297.58
Total Amount Paid	\$18,593,369.11
Begin Work	7/20/09
Subst. Completion	1/19/2011



Big Rock Interchange

PHASE 3

PCPM	Earmark	\$3,518,968
	Interstate Maintenance	\$5,074,282
	NHS	\$19,599,504
	CMAQ	\$31,820,785
	TCSP	\$2,667,600
	State	\$15,229,212
	City	\$213,574
	Total	\$78,123,925



Big Rock Interchange

PHASE 3

SARS

Let Amount	\$78,123,925.30
Change Orders	\$14,329,058.94
Current Contract Amt.	\$92,452,984.24
Total Amount Paid	\$88,425,515.45
Begin Work	12/17/2010
Subst. Completion	8/4/2015



*Big Rock
Interchange*

1st

Largest Project



*Big Rock
Interchange*

1st

Largest Change Order



Big Rock Interchange





Big Rock Interchange





*Big Rock
Interchange*

1st

Aesthetics



Big Rock Interchange





Big Rock Interchange





*Big Rock
Interchange*

1st

Maintenance of Traffic



Big Rock Interchange





Big Rock Interchange





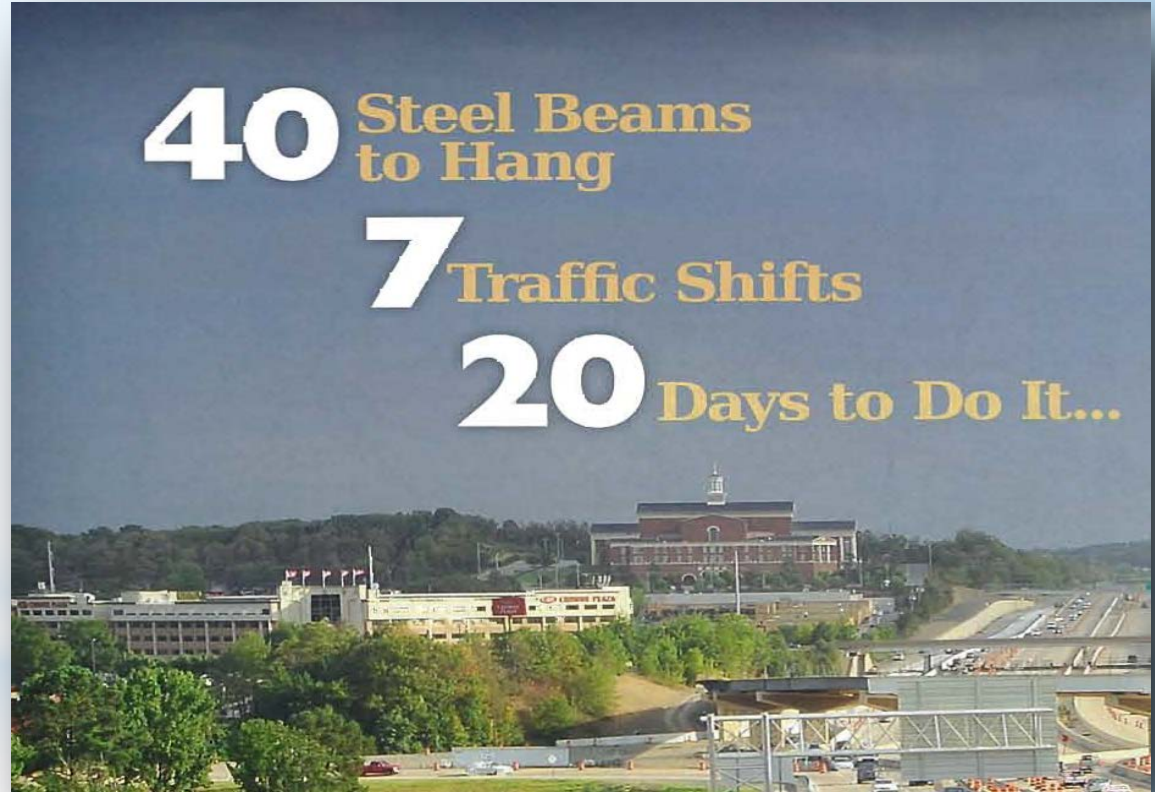
*Big Rock
Interchange*

1st

Public Information



Big Rock Interchange





Big Rock Interchange



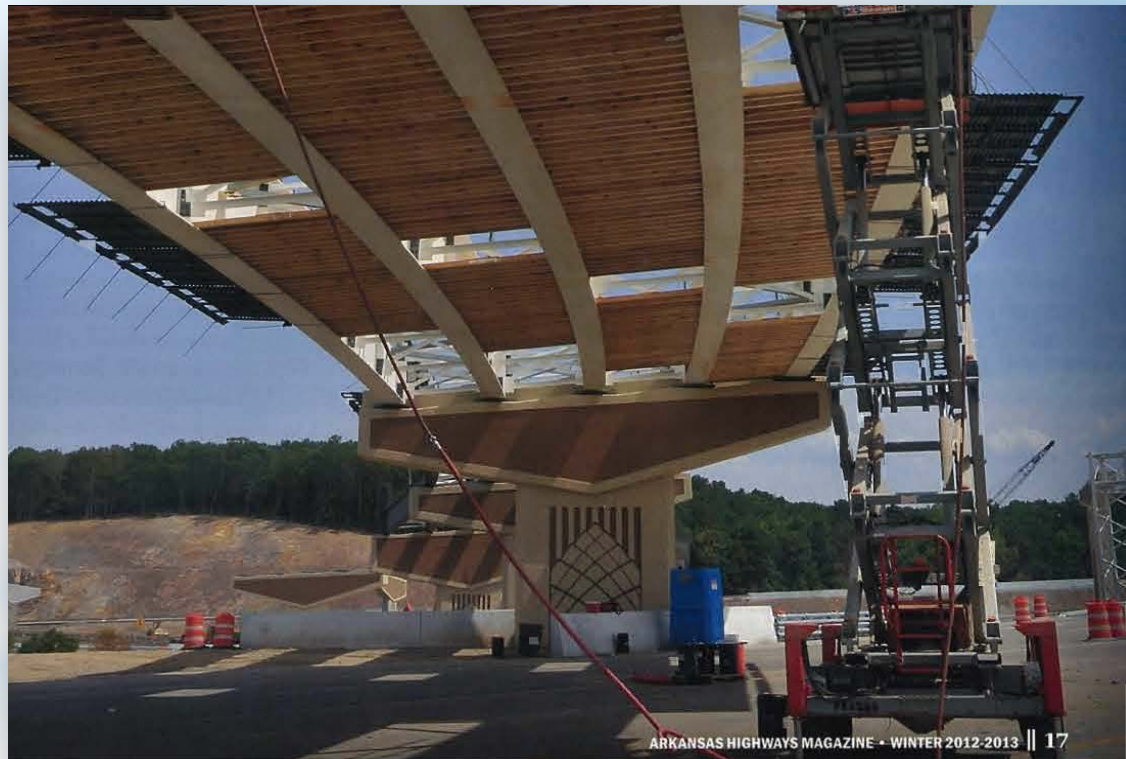


Big Rock Interchange





Big Rock Interchange





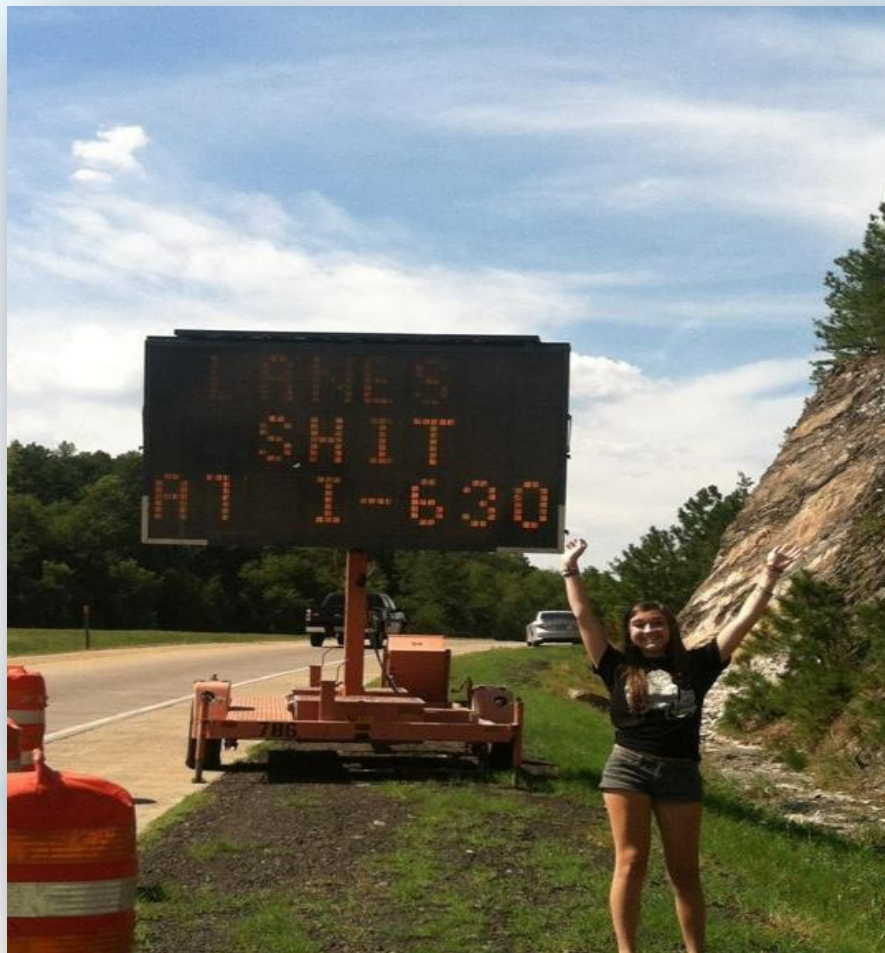
*Big Rock
Interchange*

1st

CMS Oops



Big Rock Interchange





*Big Rock
Interchange*

1st

In-lane Route Markings



Big Rock Interchange





Questions?



Big Rock Interchange

Sept. 2010





Big Rock Interchange

Oct. 2010





Big Rock Interchange

Early 2012





Big Rock Interchange

Early 2013





Big Rock Interchange

Early 2014





Big Rock Interchange

Mid 2015



Broadway Bridge

Replacement

- 25,000 vehicles per day
- 4 lanes
- 2-way undivided

