



Connecting Arkansas Program



AASHTO
Subcommittee on
Construction

August 10, 2015

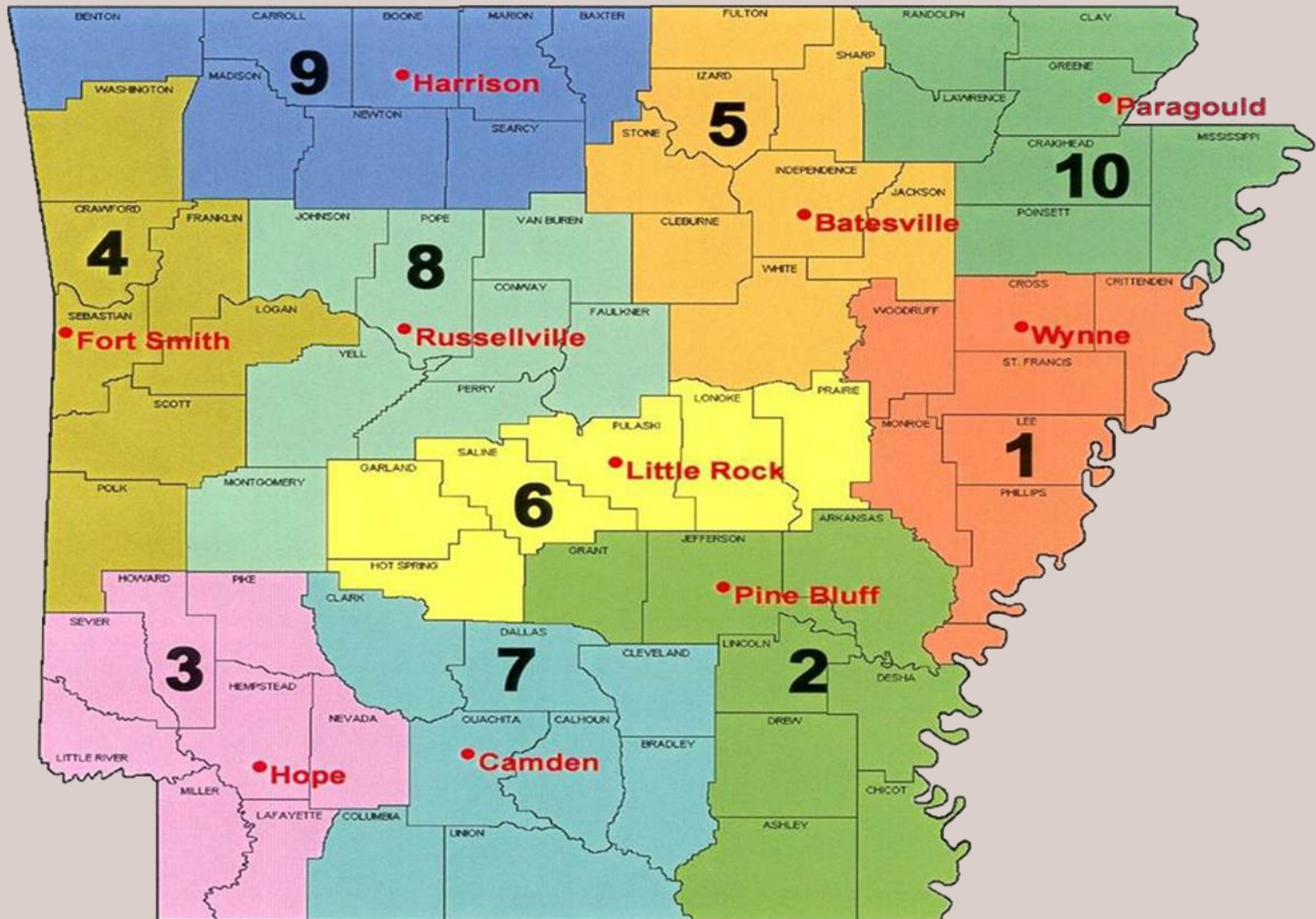
Keli Wylie, P.E.
CAP Administrator

AHTD *Quick Facts*

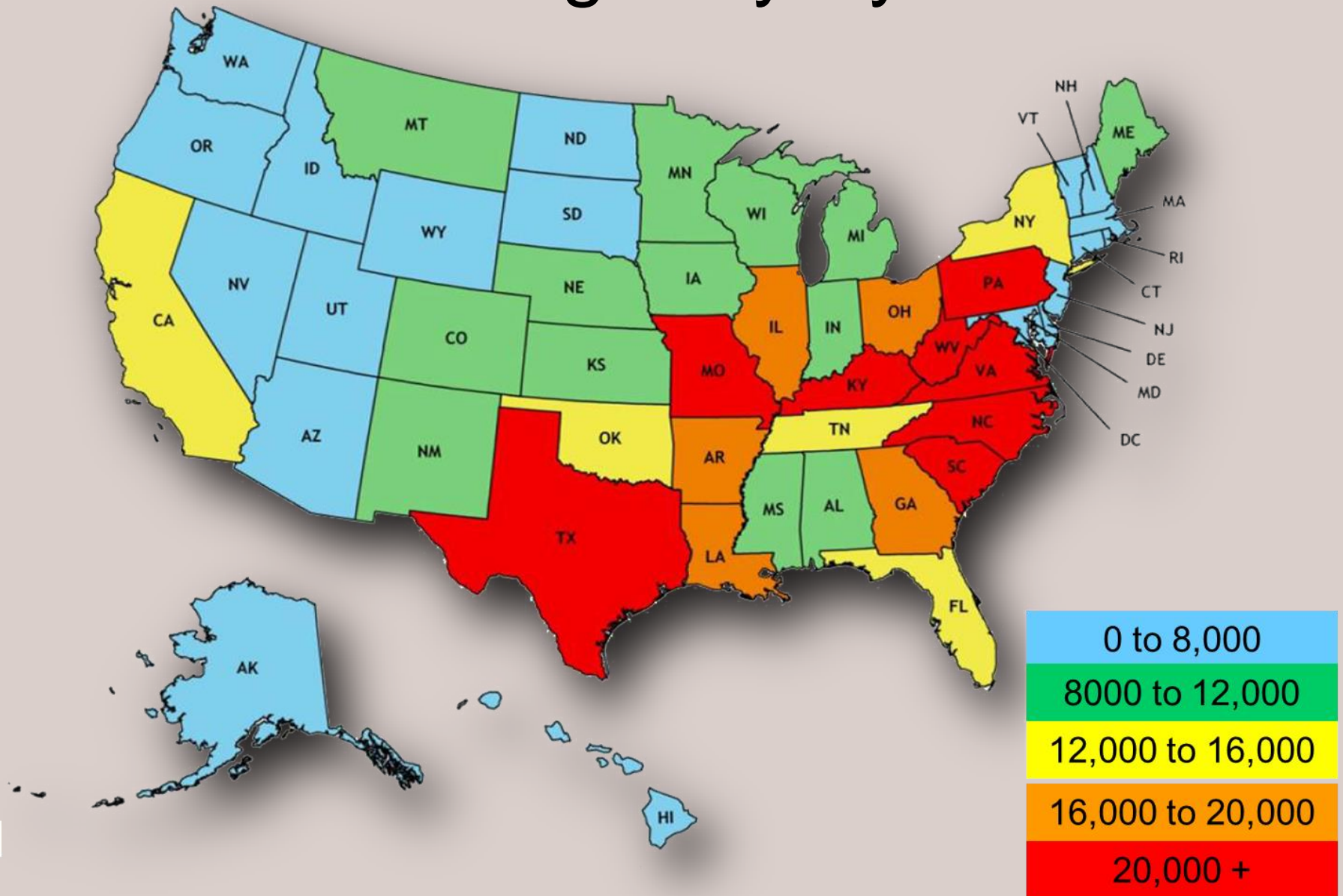
- 3rd Largest State Agency (3,634 employees)
- Maintain 16,416 miles of highway and 7,335 bridges
- Central Offices in Little Rock; 10 Districts Statewide
- Mission: Provide a safe, efficient, aesthetically pleasing and environmentally sound intermodal transportation system for the user.



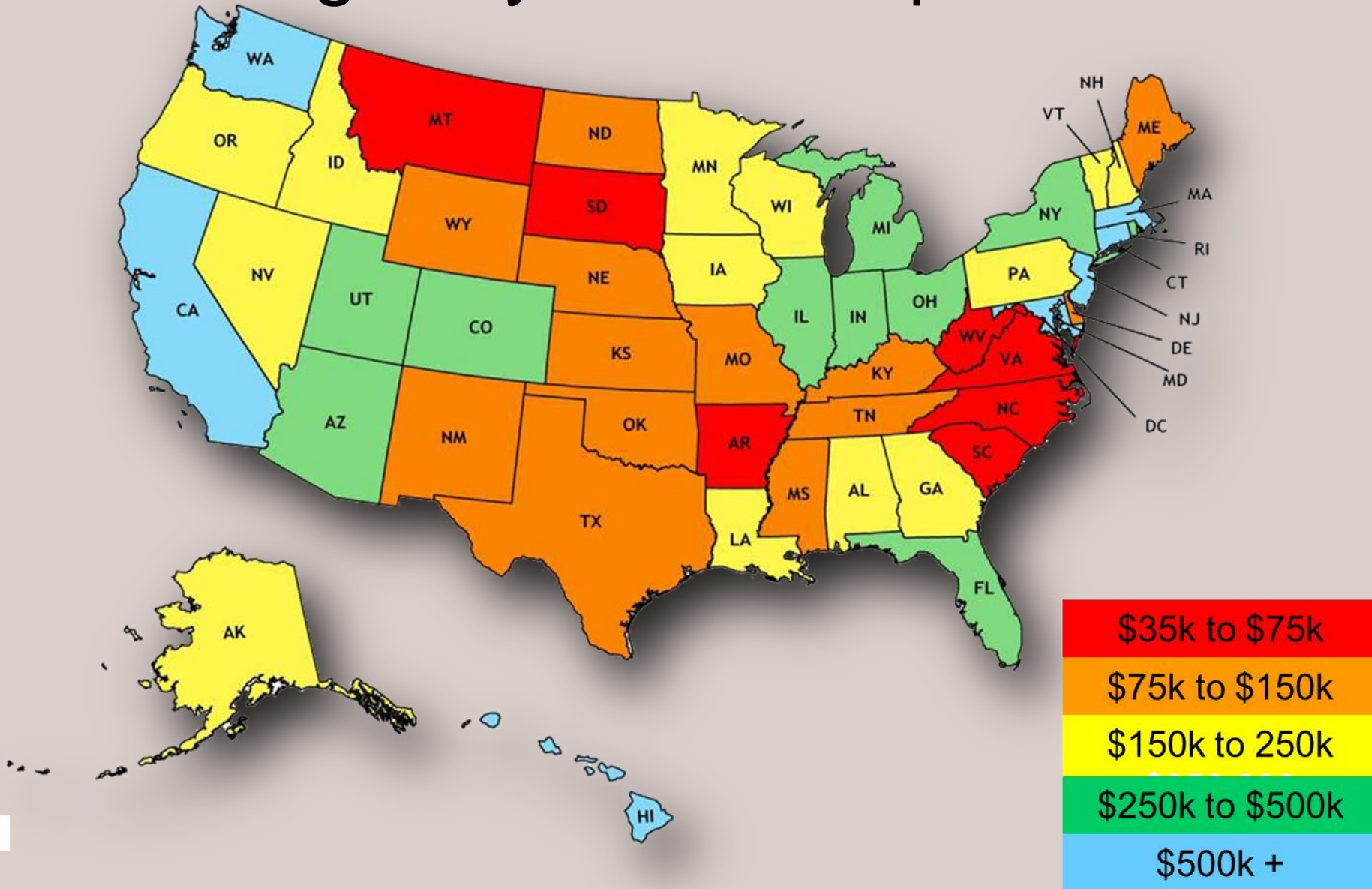
AHTD Districts



State Highway Systems

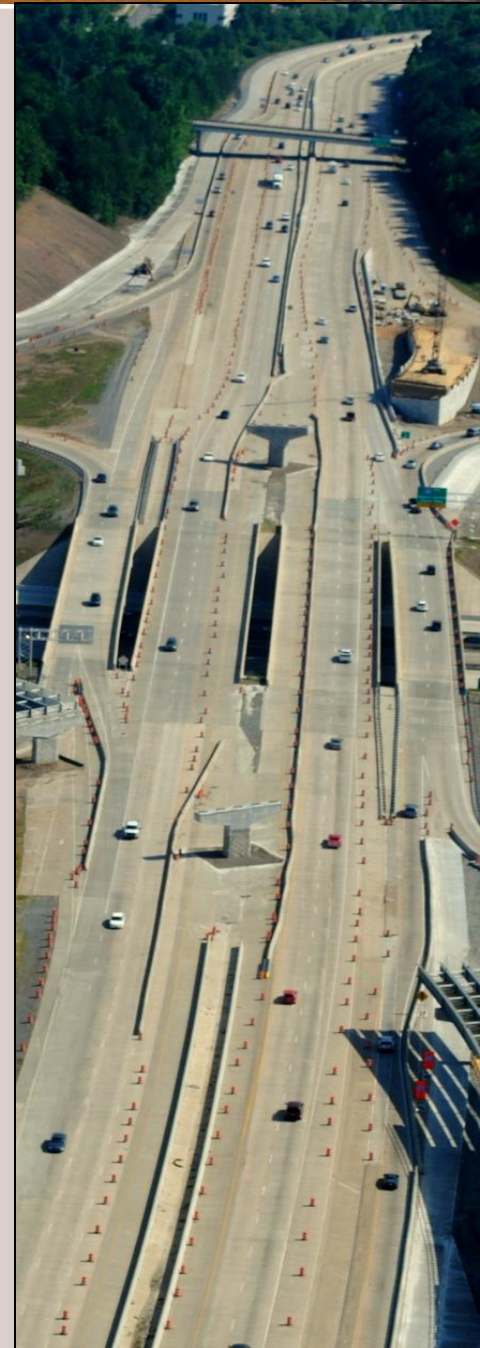


Highway Revenue per Mile

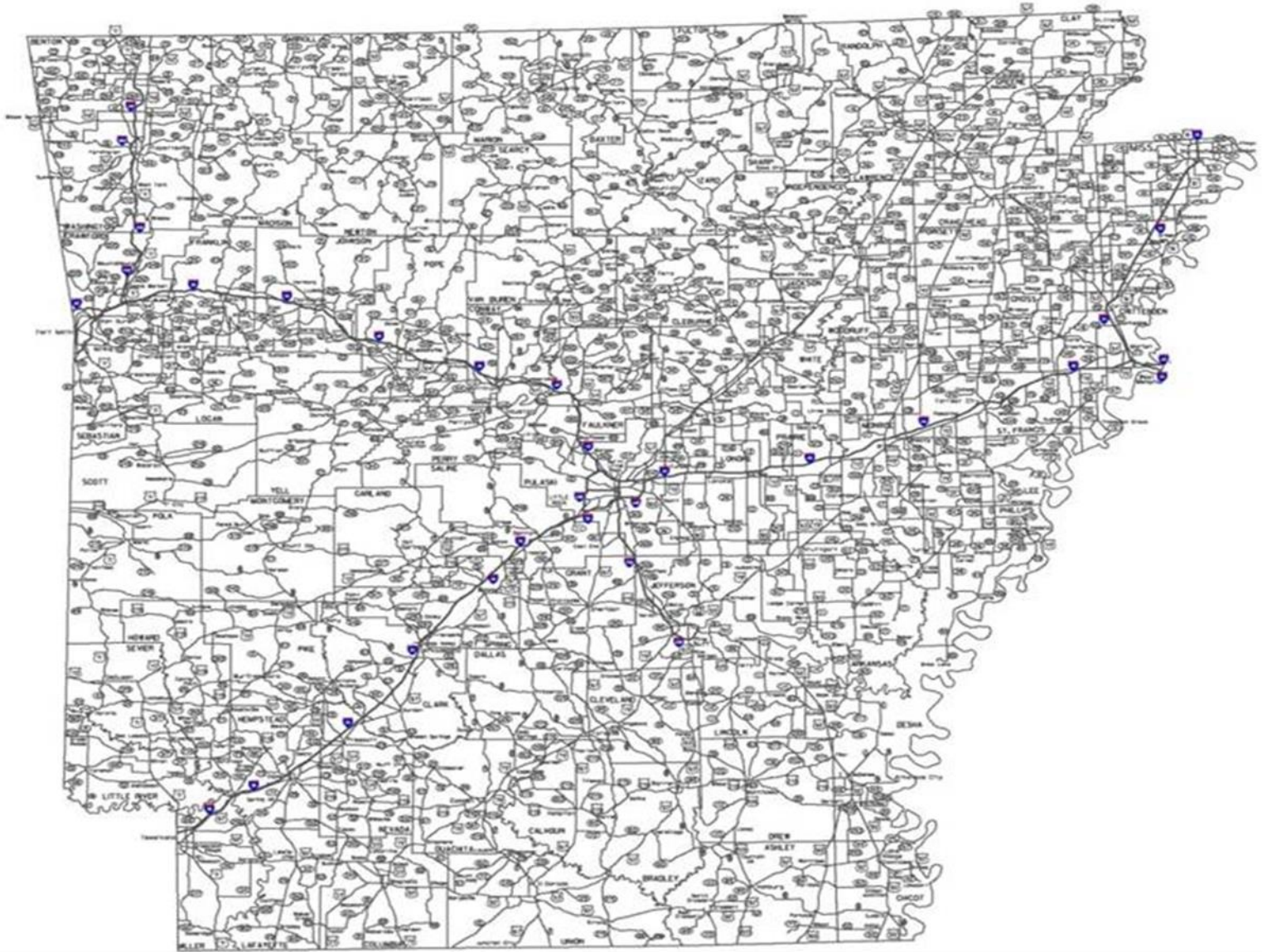


How We Compare

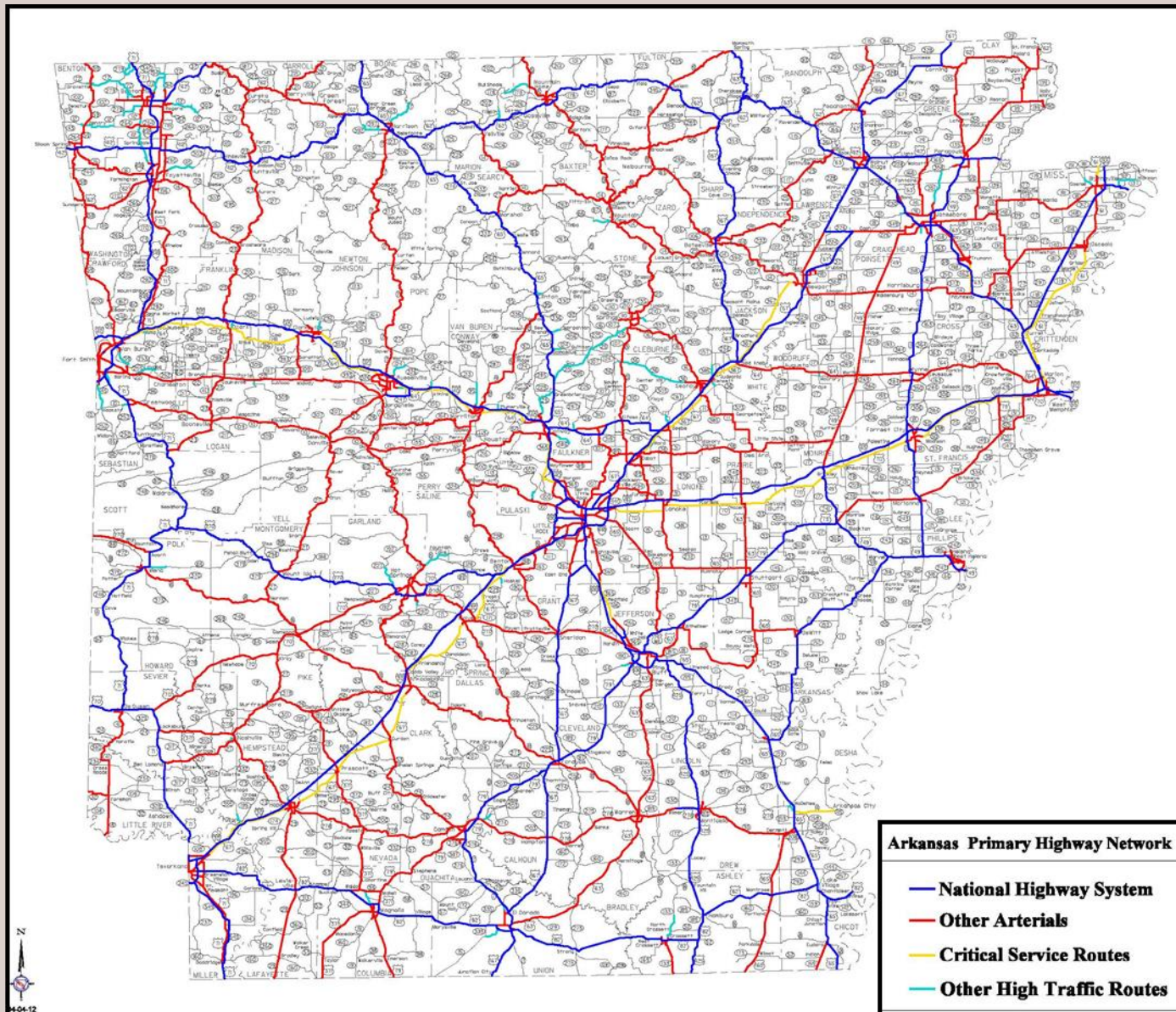
State	Mileage
Arkansas	16,416
Illinois	16,161
California	15,225
New York	15,033
Tennessee	13,793
Florida	12,084

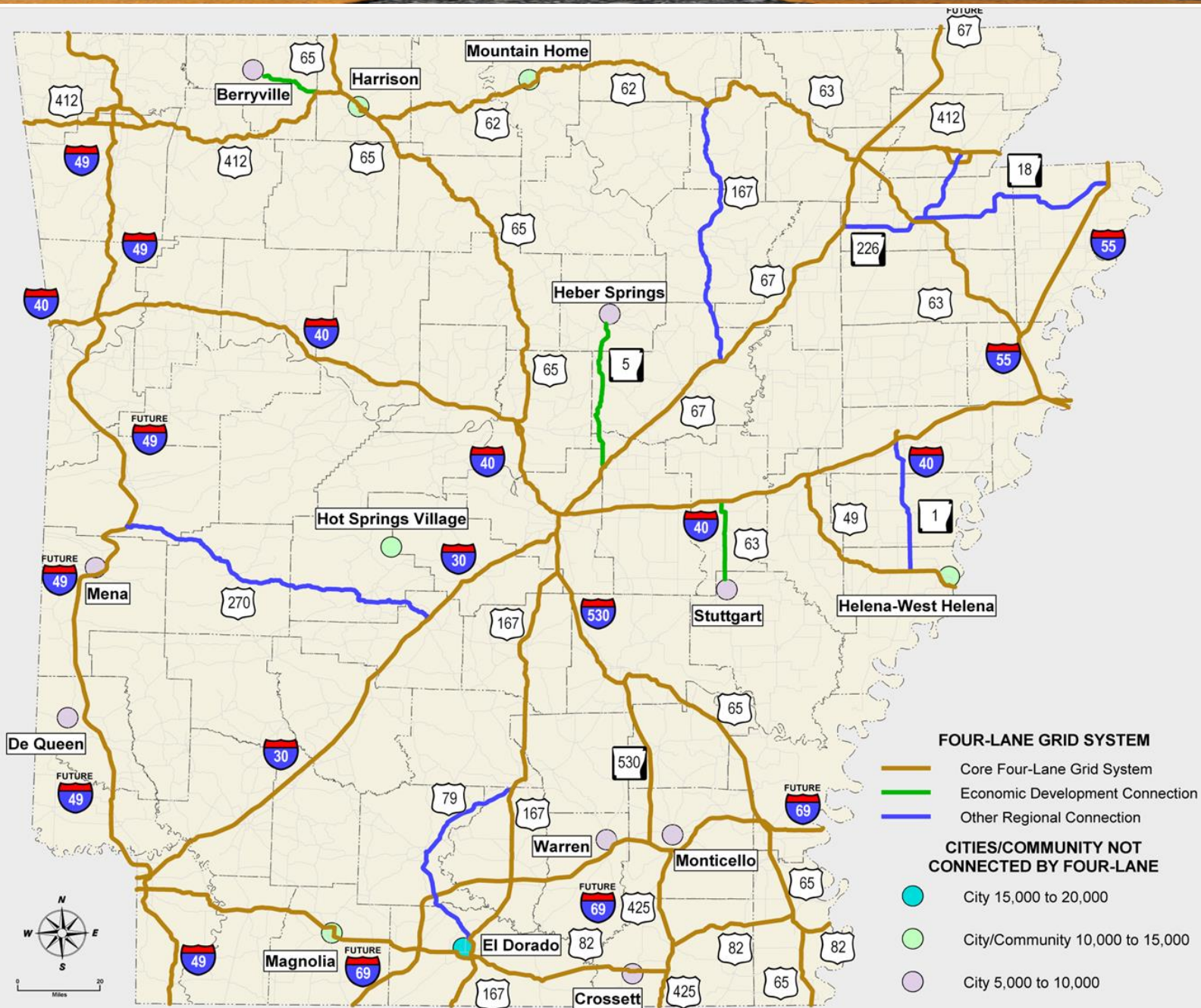


Arkansas Highway System



Arkansas Primary Highway Network







Challenges

- **12th** largest system in the country
- **44th** in highway revenue per mile

Over the next 10 years:

- **\$8.0 billion** in needs
- **\$3.6 billion** in available revenue

Current Highway Funding Sources

Federal

Per-Gallon Motor Fuel Taxes

State

Per-Gallon Motor Fuel Taxes

Severance Taxes

Vehicle Registration Fees

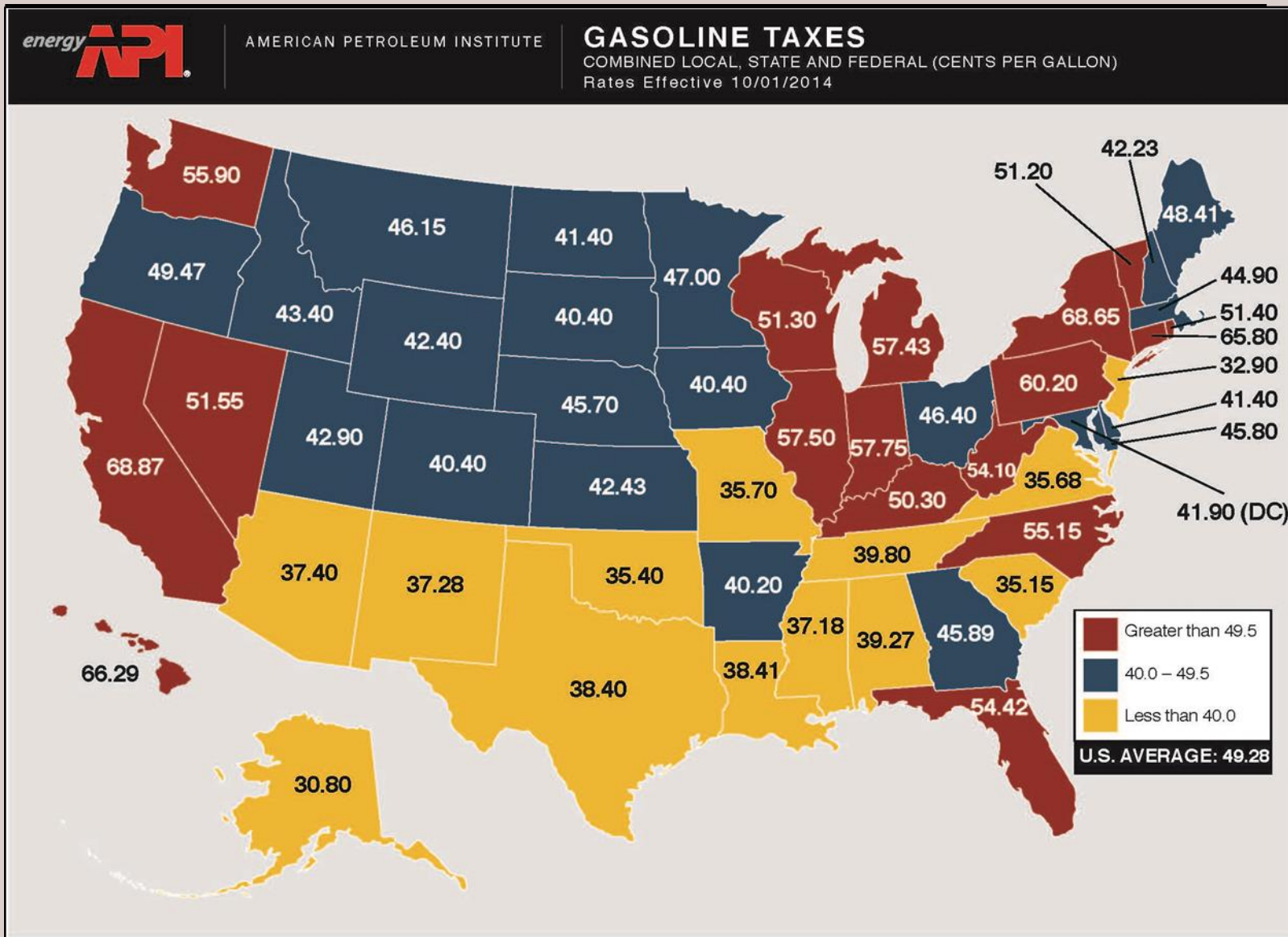
License/Permit/Inspection Fees

Temporary Sales Tax Increase



State & Federal Gasoline Taxes

Source: American Petroleum Institute, "State and Federal Gasoline Taxes," October 2014. Rates are in cents per gallon. Rates are for regular unleaded gasoline. Rates are for the year ending in 2014. Rates are for the year ending in 2014. Rates are for the year ending in 2014.



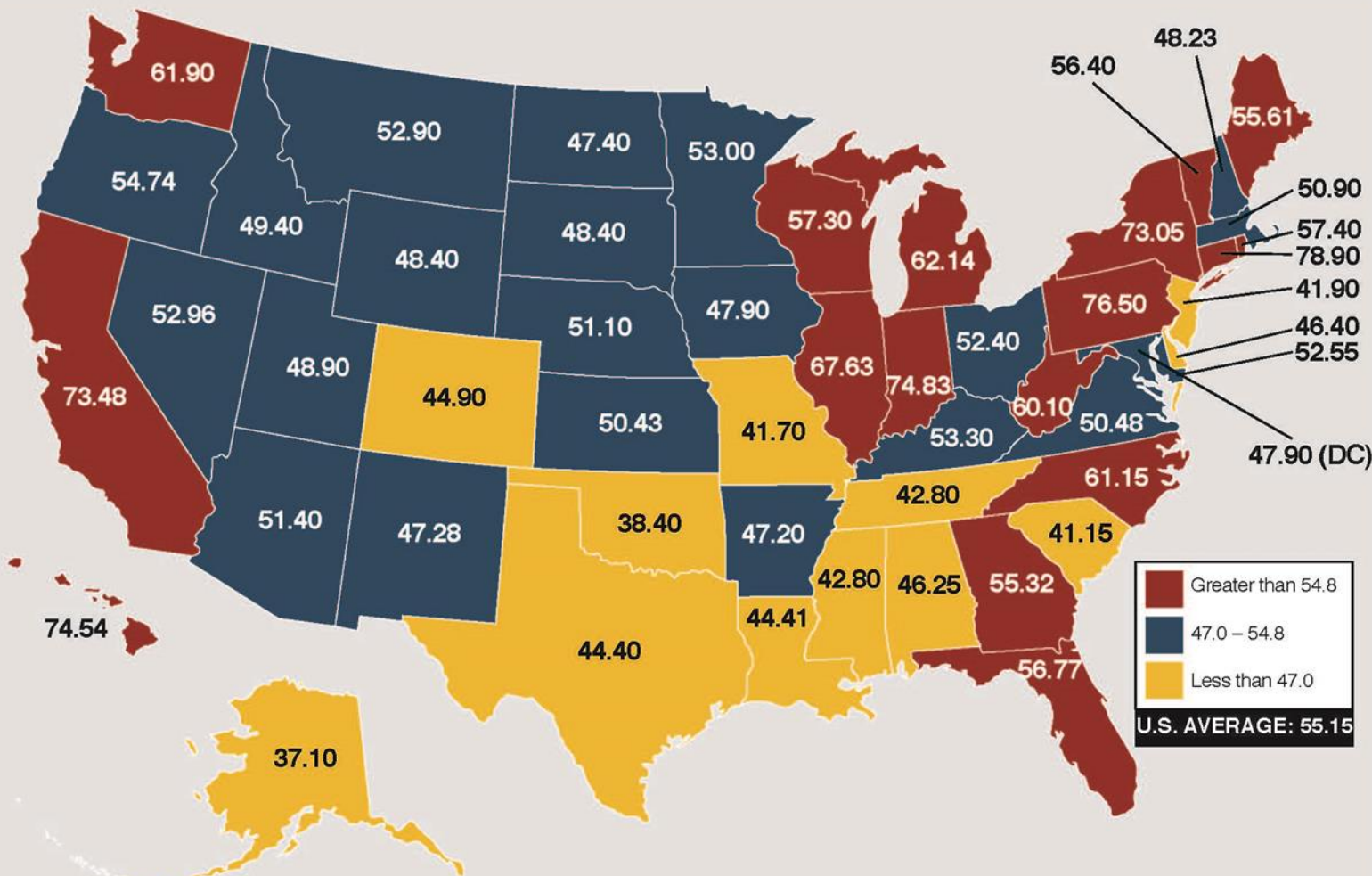
State & Federal Diesel Taxes



AMERICAN PETROLEUM INSTITUTE

DIESEL TAXES

COMBINED LOCAL, STATE AND FEDERAL (CENTS PER GALLON)
Rates Effective 10/01/2014



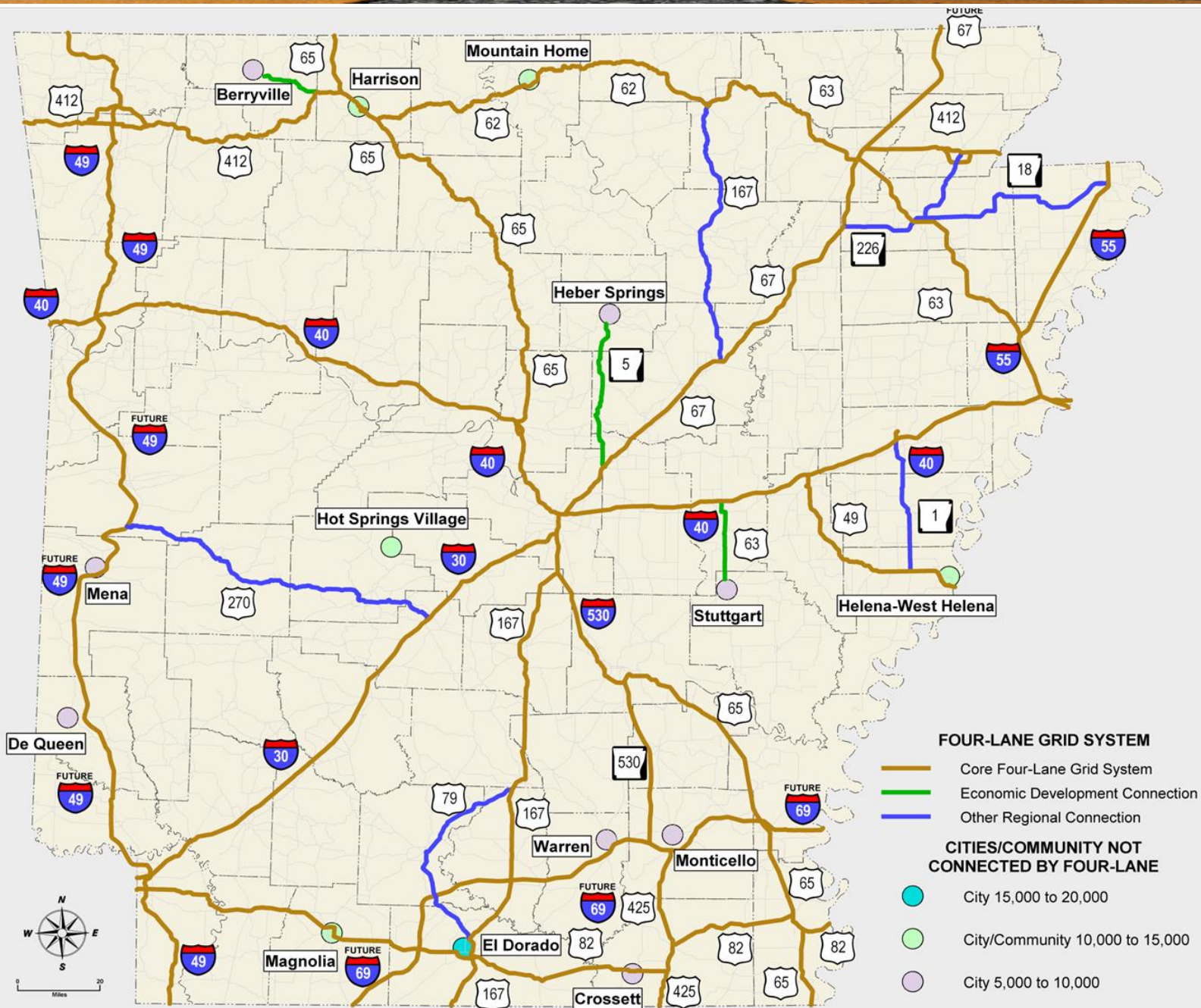
Revenue Proposals



- Reissue GARVEE Bonds for Interstate Rehabilitation Program
- Temporary One-Half Cent General Sales Tax to Fund Multi-Year Construction Program
- State Aid Programs for Cities
- Transfer Sales Tax on New and Used Vehicles, Auto Repair Parts and Services, Tires and Batteries

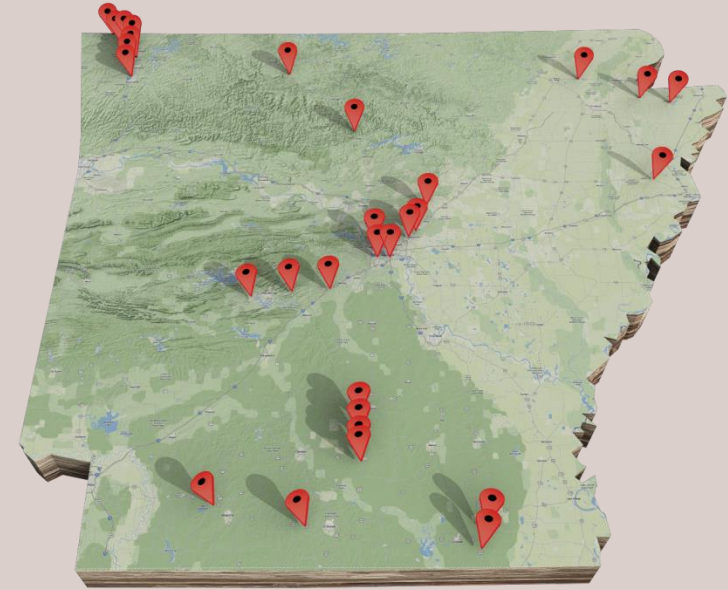


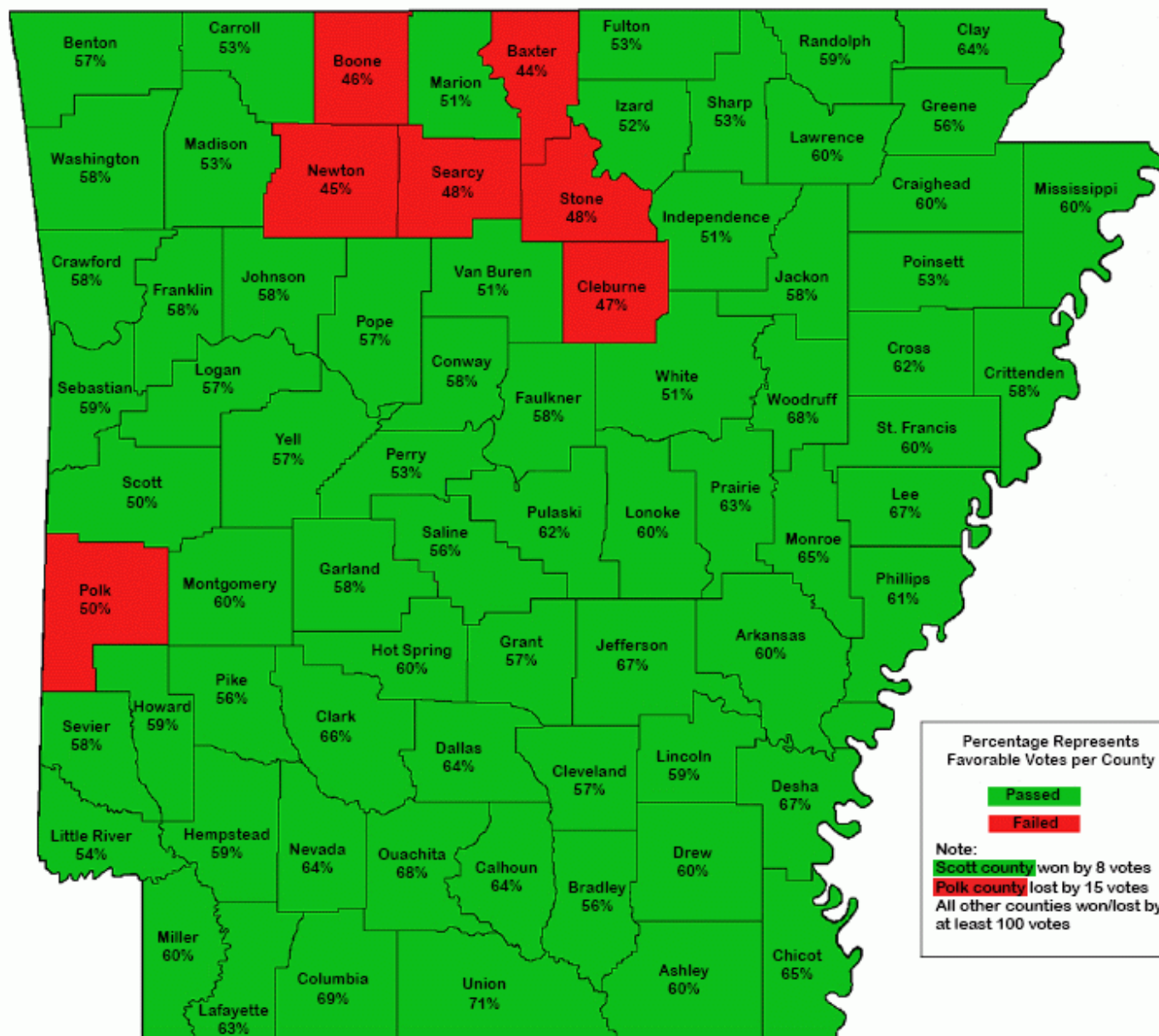
- Voter-approved constitutional amendment (2012)
- 10-year, half-cent sales tax to improve highway and interstate projects throughout the state
- One of the largest highway construction programs ever undertaken by AHTD
- \$1.8 billion program
- 35 projects in 19 corridors



Program Benefits

- Improves transportation connections to all four corners of Arkansas
- Increases capacity by widening highways to four lanes
- Improves traveler safety
- Eases congestion
- Supports job growth and improves Arkansas' economy
- Accelerates highway improvement projects.





CAP Program Management



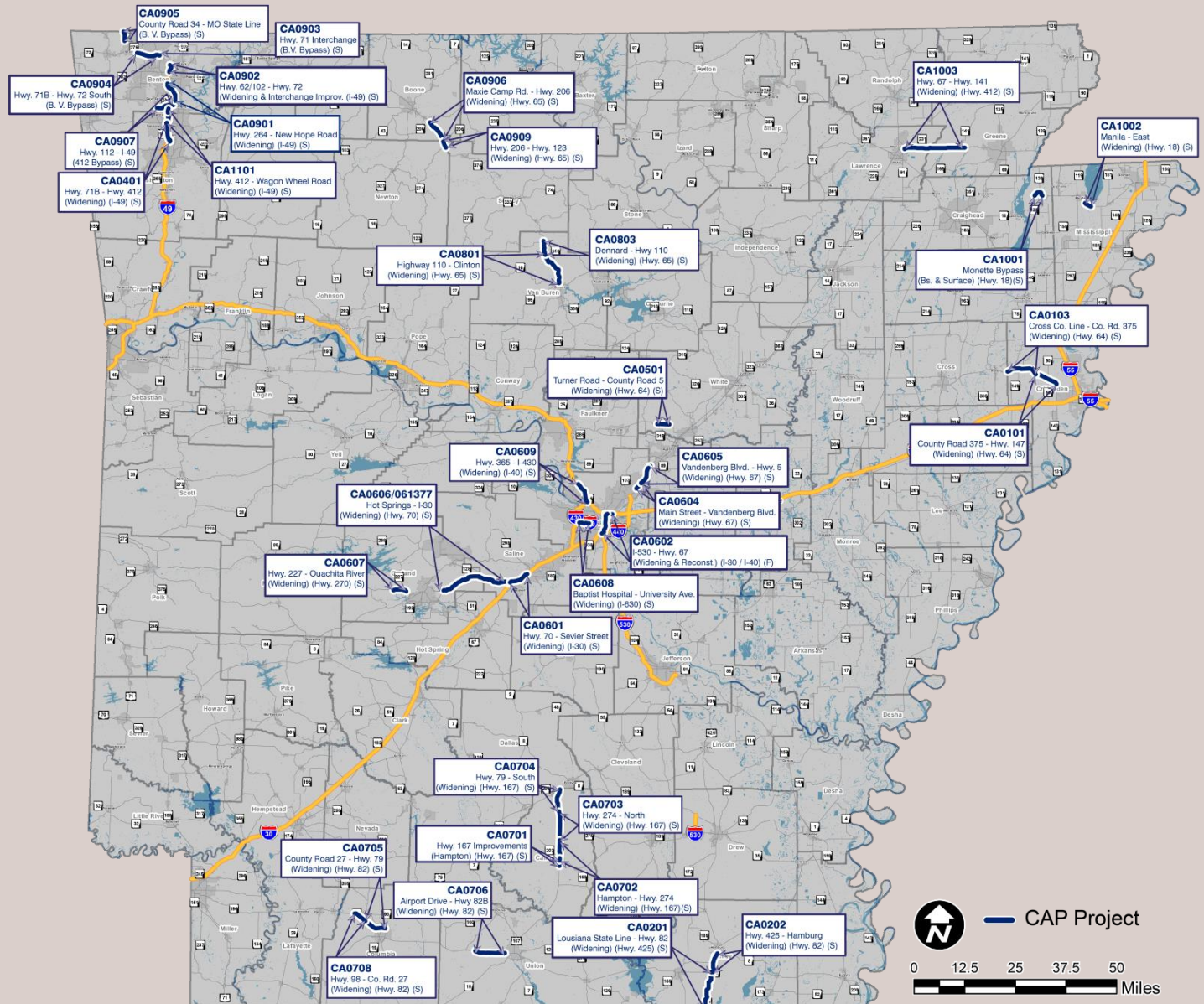
Jerry Holder, Jr. – CAP Manager

Reasons

- Current AHTD programs already in progress
- Accelerated schedule
- Addition of temporary capacity
- Extension of AHTD staff
- Brings lessons learned from other programs
- Design/Build procurement experience



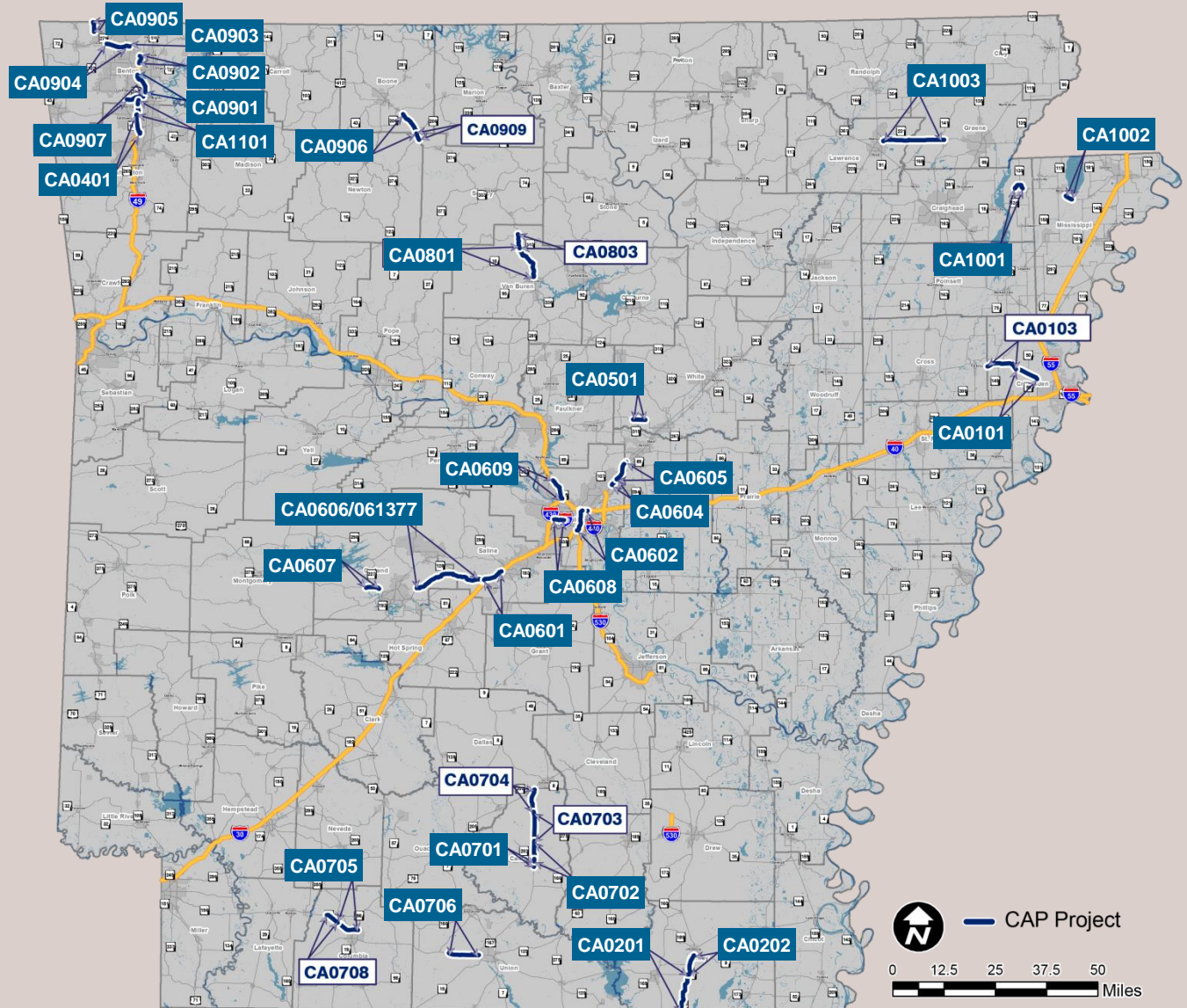
CAP Projects Map



Design Status

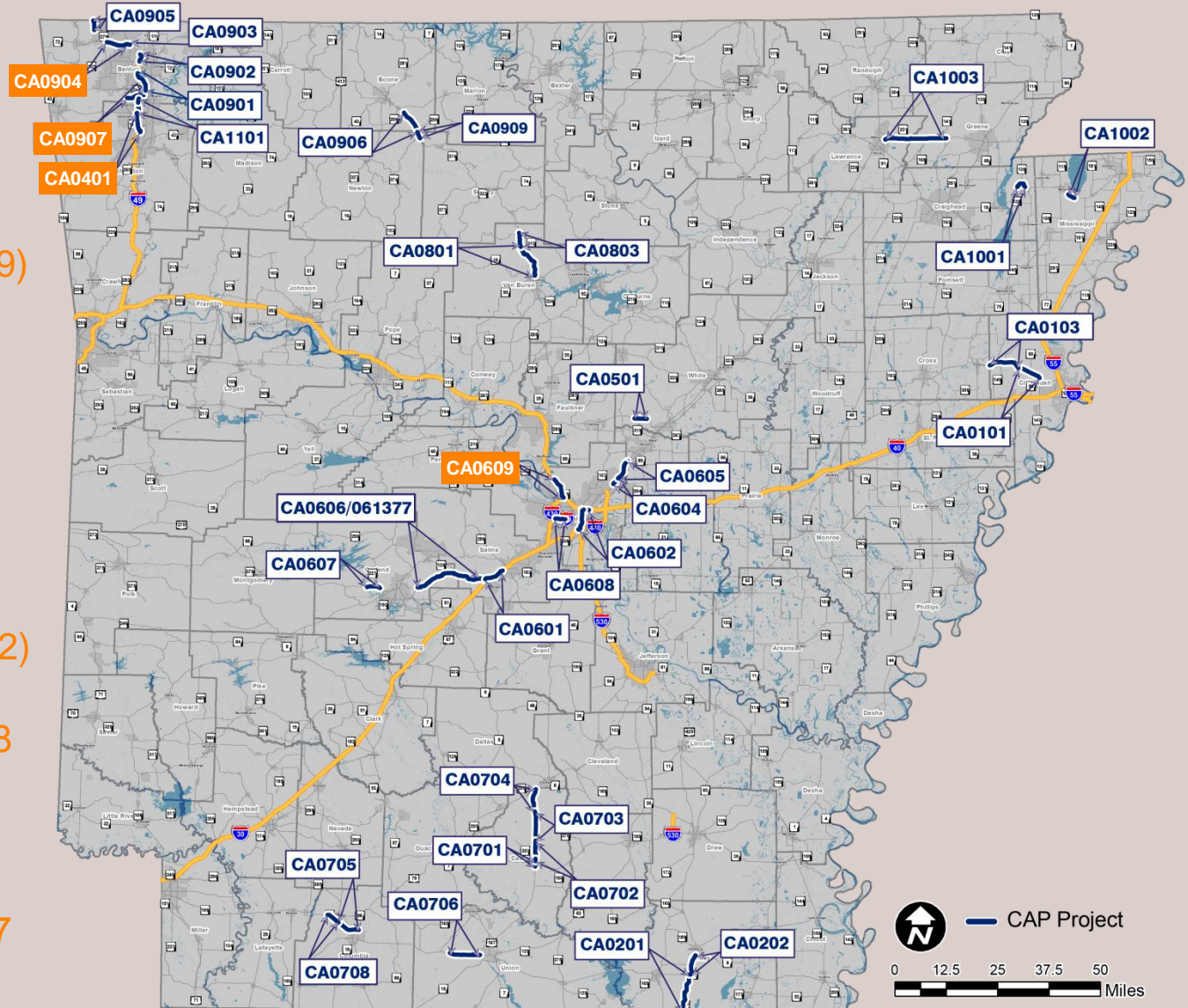
Design

29 projects in design or have completed design



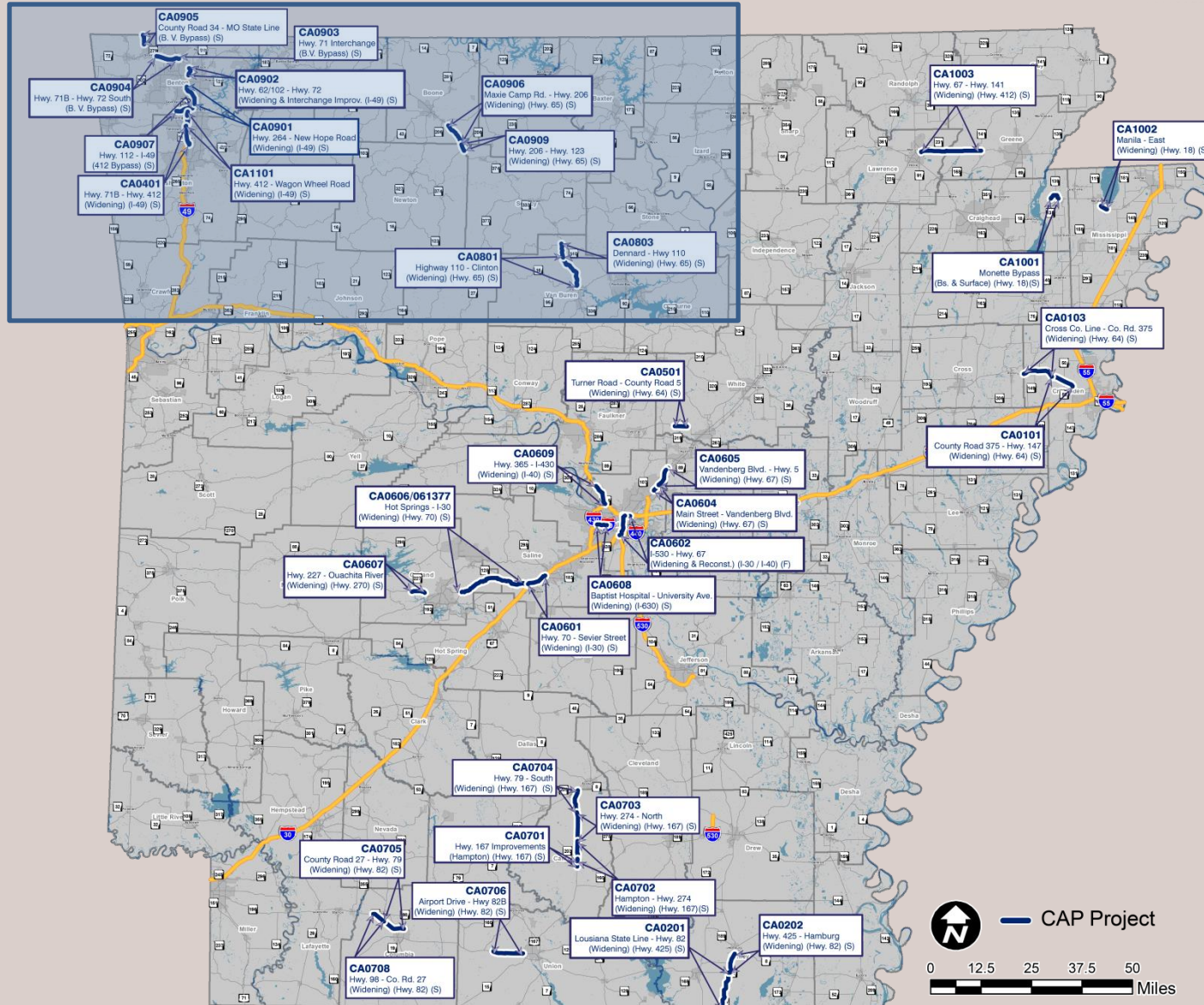
4 projects in construction

- CA0904 (Hwy. 549)
 - Began: April '14
 - Est. Comp: Mid '16
- CA0609 (I-40)
 - Began: Nov. '14
 - Est. Comp: Mid '16
- CA0907 (Hwy. 412)
 - Began: March '15
 - Est. Comp: Late '18
- CA0401 (I-49)
 - Began: July '15
 - Est. Comp: Late '17

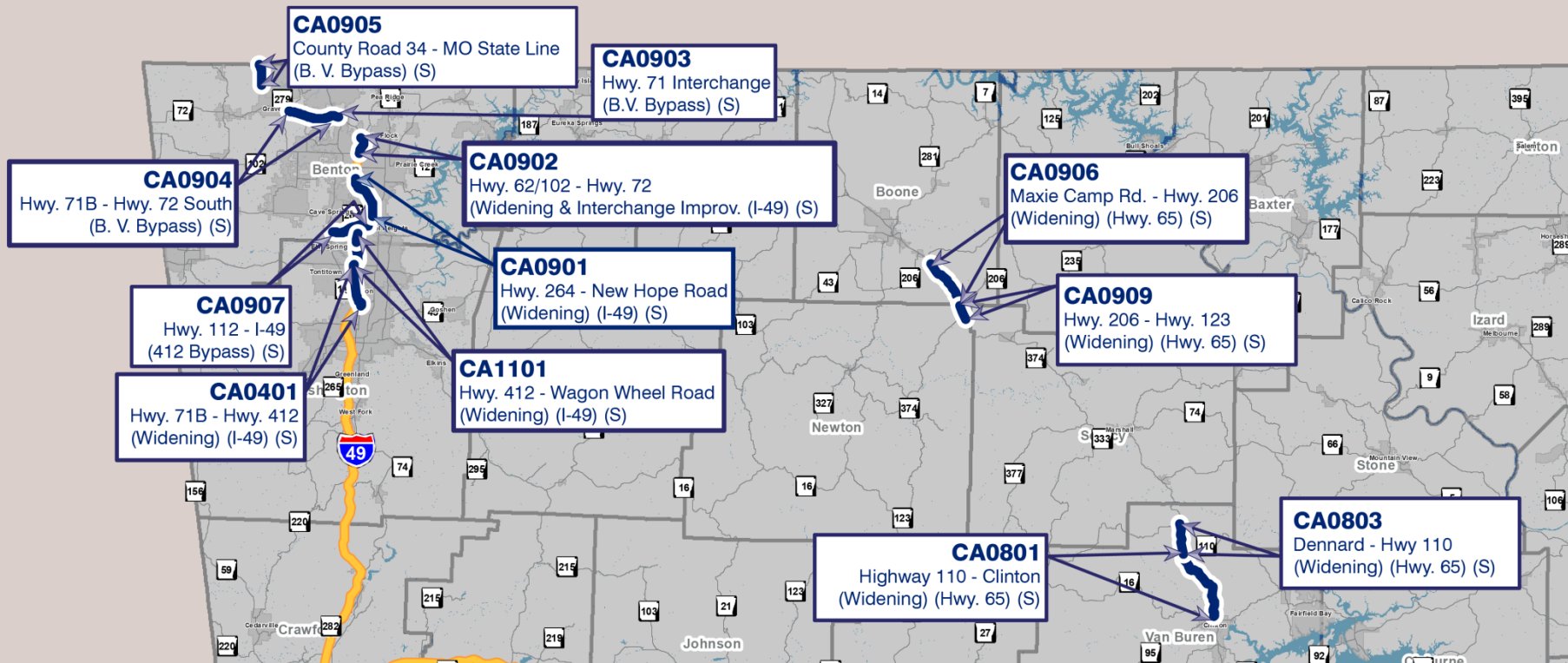




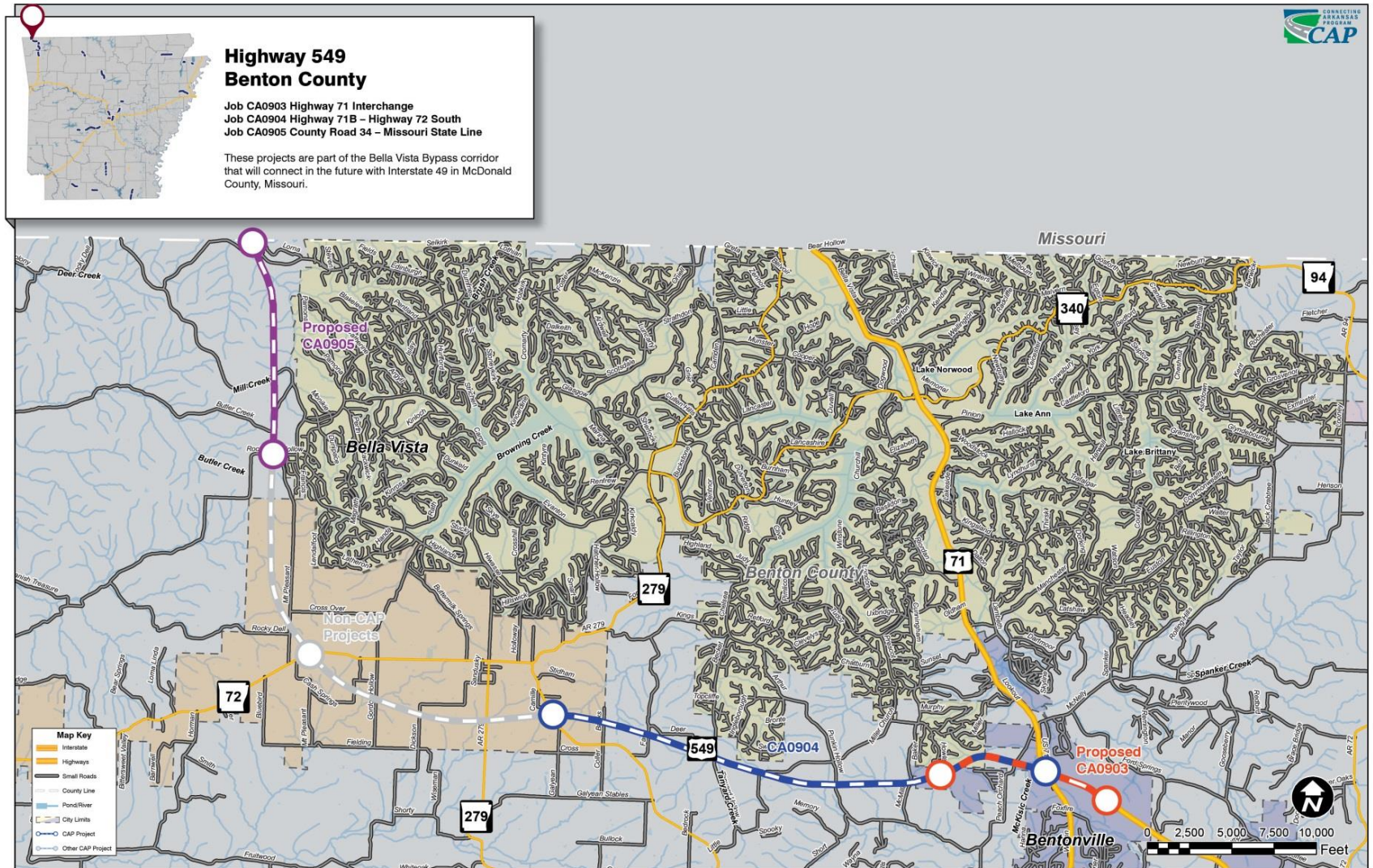
CAP Projects Map



Northwest Arkansas



Bella Vista Projects Overview



*These project limits are preliminary and are subject to change as project development progresses.

Version: 1/08/2015

Highway 71: Benton County

Bella Vista Bypass (Hwy 71B – Hwy 72 South)

- AHTD, CAP Team,
Michael Baker
- Began in April 2014 – first
CAP project under
construction
- Duration – 250 working
days (Mid-2016 completion)
- Approximately 6.4 miles
- Involves 6 bridges
- \$52.6 million











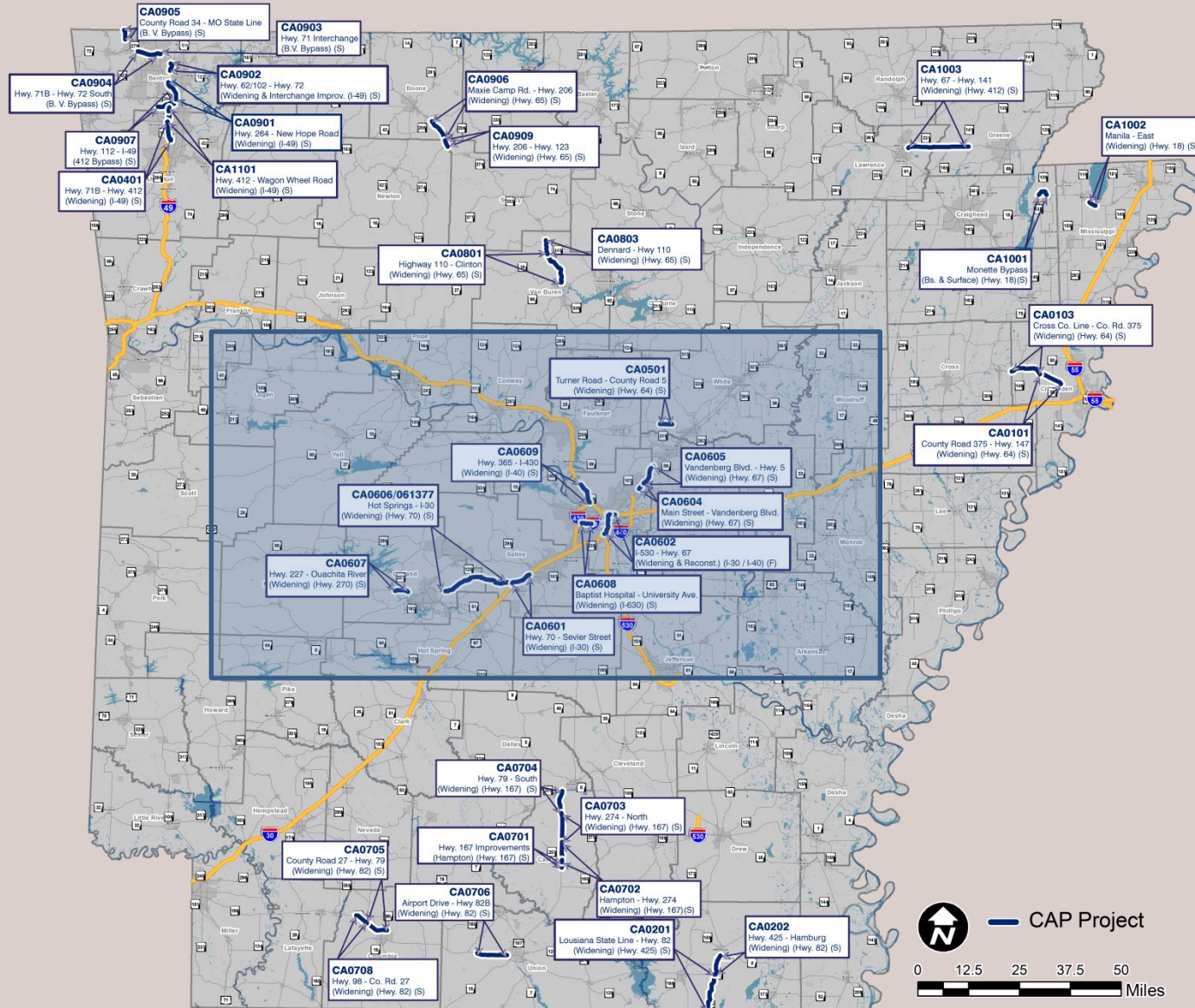




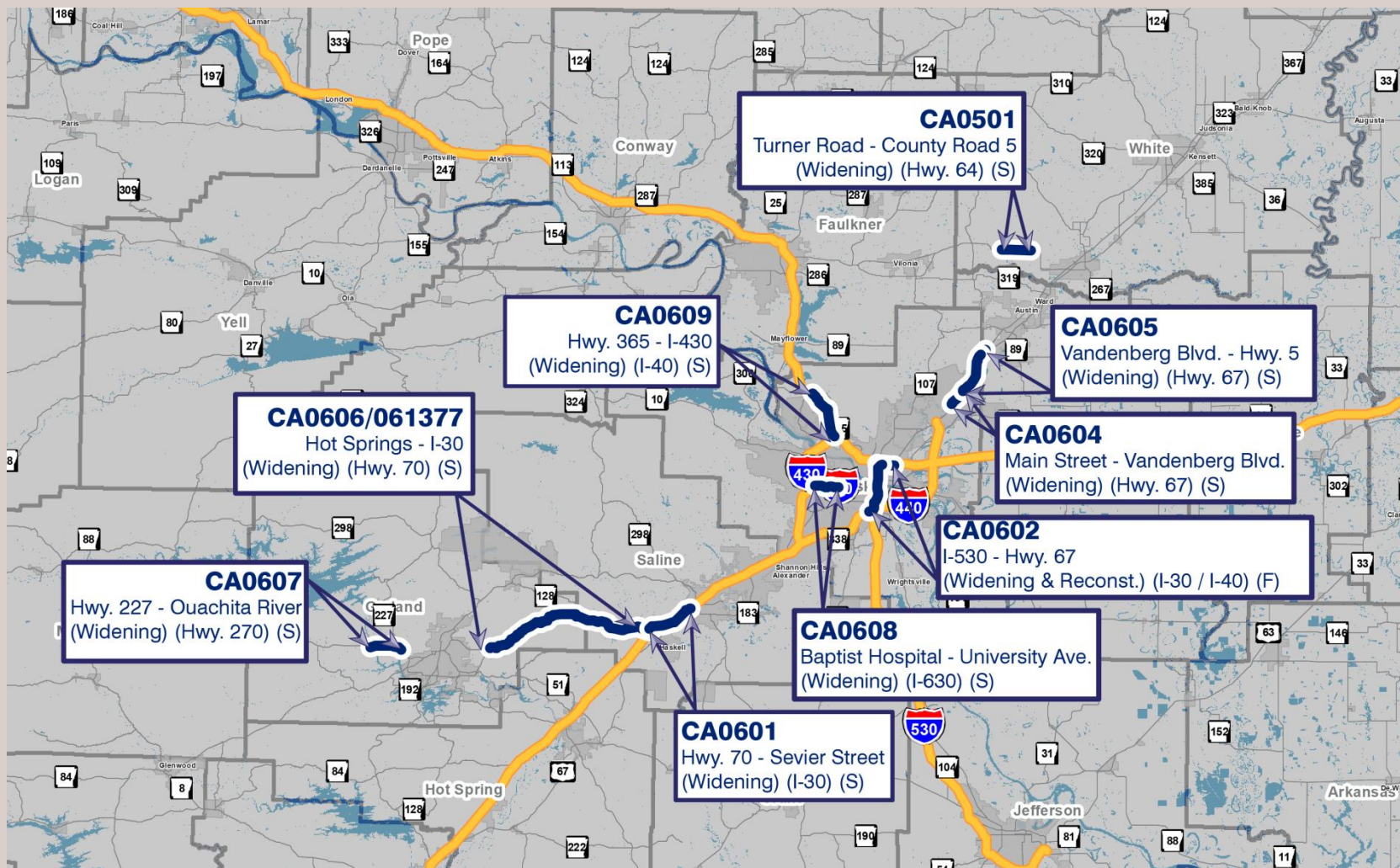




CAP Projects Map



Central Arkansas

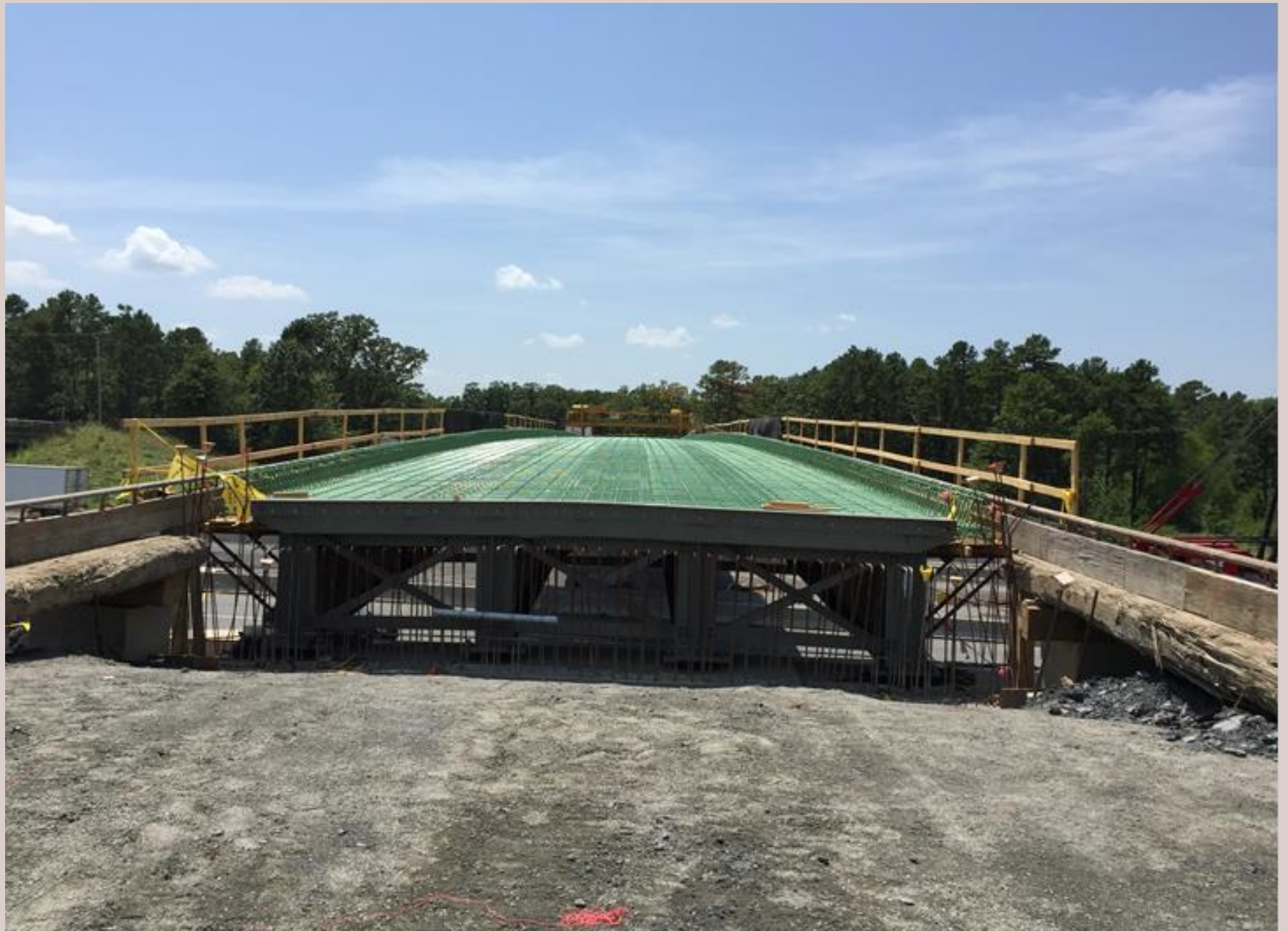


Hwy. 365 – I-430 Widening & I-430 Interchange Improvements

- AHTD and CAP Team
- Began in November 2014
- Duration – 206 working days (Mid-2016 completion)
- Approximately 5.1 miles
- Completes widening from Conway to Little Rock and interchange improvements
- \$38.4 million









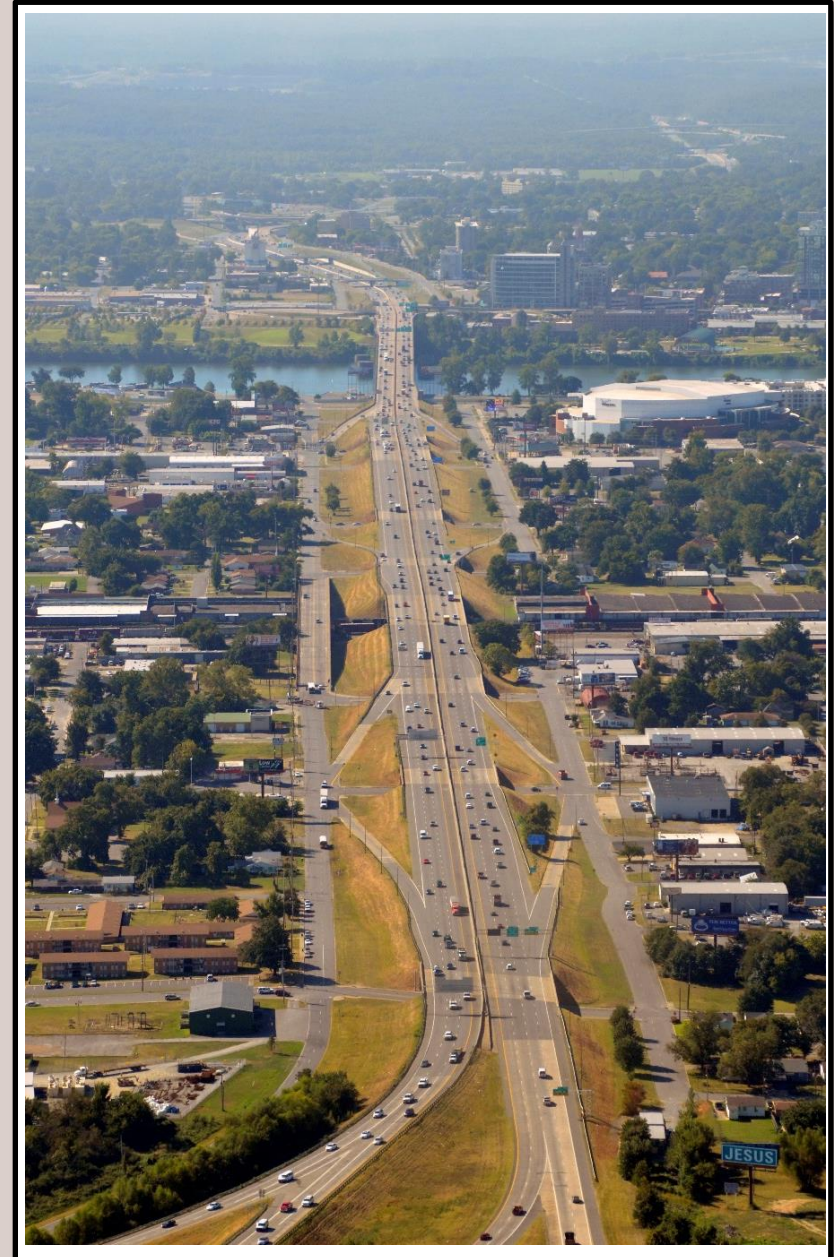




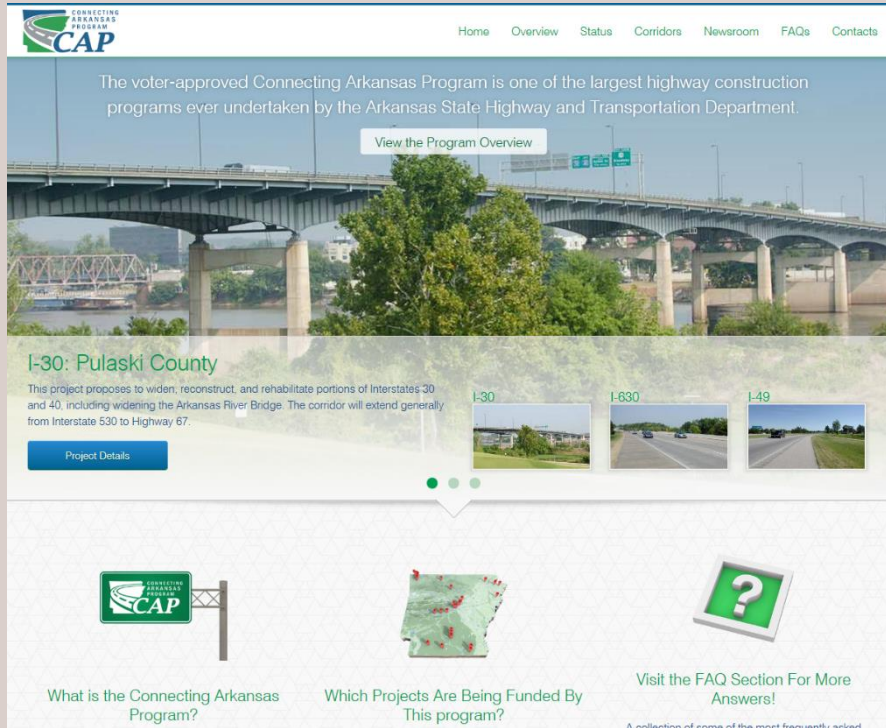


CA0602 Project

- Approximately 6.7 miles in length and extends through portions of Little Rock and North Little Rock
 - ✓ along I-30 from I-530 to the south and I-40 to the north
 - ✓ along I-40 to its interchange with I-67 in North Little Rock
- 10-Lane with Downtown C/D advanced to NEPA after Planning and Environmental Linkages Study
- Major components
 - ✓ River bridge replacement
 - ✓ Interstate widening
 - ✓ Interchange improvements
 - ✓ Ramp consolidation

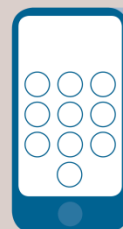


Questions/Comments?



CAP Website

ConnectingArkansasProgram.com



Contact us at
(501) 255-1519

or email at
Info@ConnectingArkansasProgram.com

Phone and Email